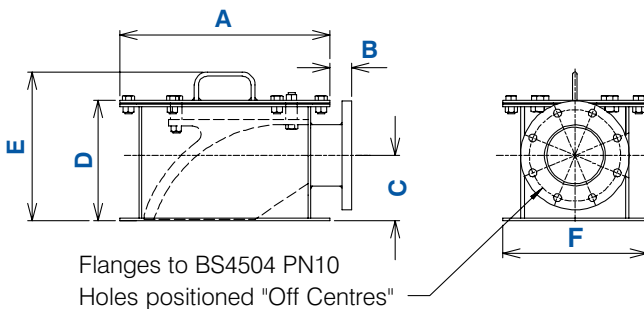


Terminal Box

Terminal Box

The Terminal Box is employed as a delivery pipeline termination. It is used instead of a Dump Valve at the end of a line of series fed reception points and on systems with only one reception point.

The Terminal Box has a much lower profile than a long radius bend termination. It therefore achieves tangential entry of material into the reception hopper. Material is deflected through 90° by a deflector plate which is readily accessible for inspection or replacement. On any size of pipeline, Terminal Boxes and Dump Valves are completely interchangeable.



Dimensions - (mm)							
SIZE	A	B	C	D	E	F	KG
50	310	30	100	188	253	230	25
80	370	40	123	214	279	290	45
100	370	40	110	214	279	290	45
125	483	50	150	277	342	333	80
150	710	48	210	361	417	440	145
175	710	48	220	361	417	440	160
200	768	44	230	410	456	488	190
250	934	173	290	545	635	604	500
300	960	160	315	570	660	680	800
350	1104	198	350	629	719	754	950

Dump Valve

The Dump Valve enables a number of hoppers to be fed in series. It has two operating conditions 'dump' and 'straight through'.

One valve is installed at each delivery point in the line, except the last, which requires a terminal box. Each delivery point will therefore be fed or by-passed in accordance with the demands of the automatic control system.

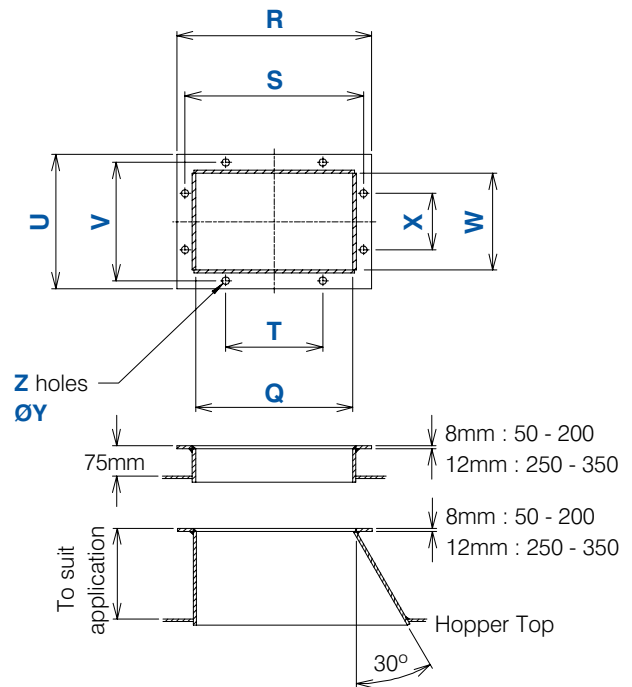
The Dump Valve is actuated by a standard heavy duty air cylinder. When in the 'straight through' condition

the conveying pipeline is sealed by a self-inflating, easily replaceable seal. This maintains the dust free characteristics of the system during the delivery cycle. System extension or rearrangement is simplified by the complete interchangeability of

Dump Valves and Terminal Boxes. Materials of construction vary to suit applications.

Mounting Flange

Fabricated Mounting Flanges are used to secure Dump Valves and Terminal Boxes to intermediate/termination points and are available in a number of sizes.

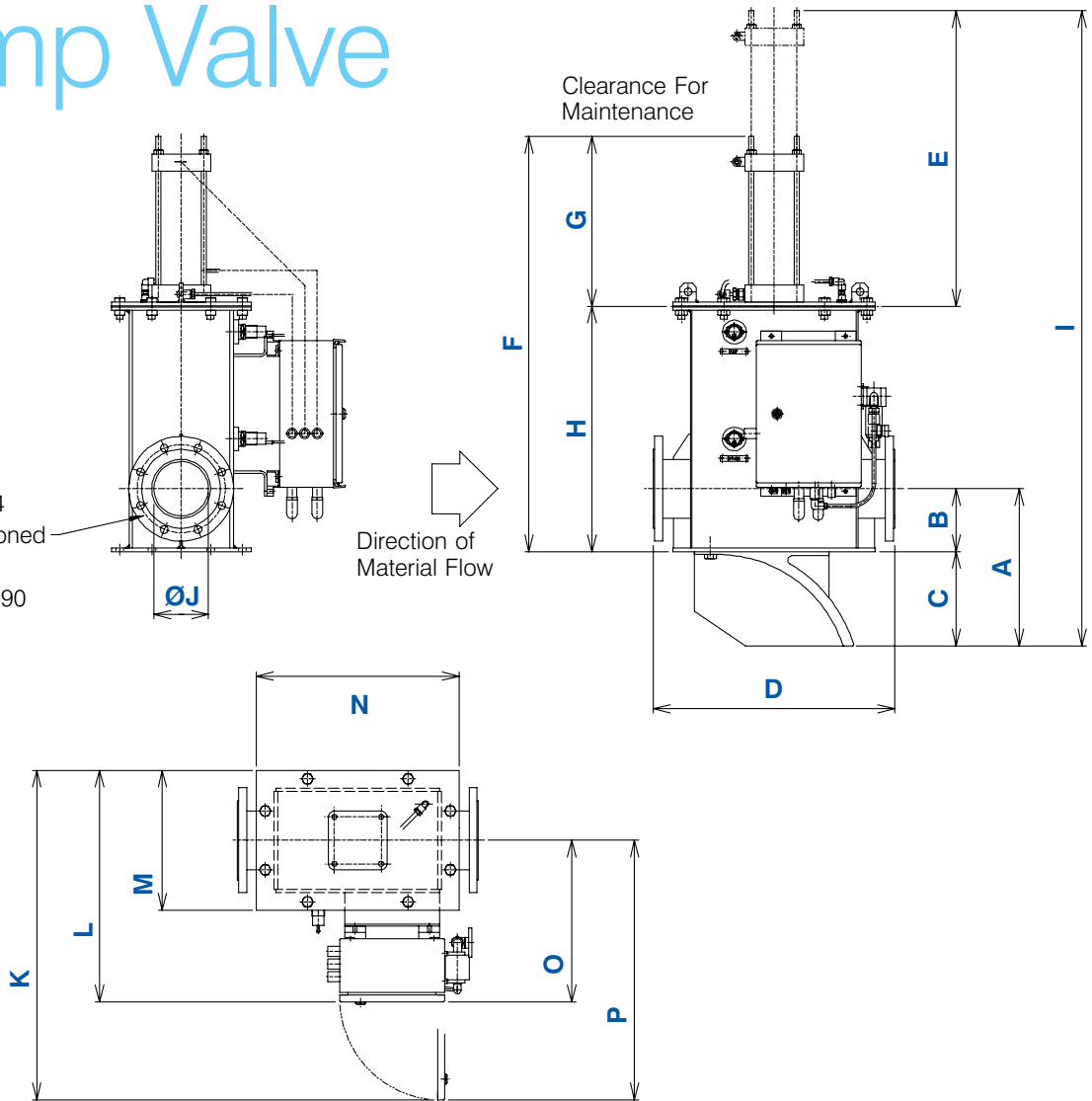


Dimensions - (mm)										
SIZE	Q	R	S	T	U	V	W	X	ØY	Z
50	230	310	280	160	230	200	150	120	18	8
80	288	370	340	170	290	260	208	130	18	8
100	288	370	340	170	290	260	208	130	18	8
125	390	483	442	240	333	293	240	140	18	8
150	558	710	670	320	440	400	308	230	18	8
175	558	710	670	320	440	400	308	230	18	8
200	608	770	720	360	490	440	328	250	18	8
250	780	934	870	435	604	540	440	180	22	14
300	780	960	876	438	680	596	500	200	22	14
350	910	1100	1030	206	750	680	550	170	22	18



Dump Valve

Flanges to BS4504
 PN10 Holes positioned
 "Off Centres"
 See Data Sheet 1090



* Remote mounted panel on 50mm conveying line. See front page for flange mountings.

Dimensions - (mm)																	
SIZE	A	B	C	D	E	F	G	H	I	ØJ	K	L	M	N	O	P	KG
50	242	100	142	370	820	658	283	375	800	51.8	*	*	230	310	*	*	55
80	270	123	147	450	890	735	309	426	882	79.8	698	463	290	370	318	552	83
100	259	110	149	450	960	804	347	457	953	102.3	697	463	290	370	318	552	95
125	375	150	225	575	1230	990	406	584	1215	129.8	757.5	523.5	333	483	357	591	145
150	432	210	222	800	1390	1165	419	716	1387	154.1	846	612	440	710	392	626	220
175	490	20	270	800	1615	1341	541	800	1611	181.1	846	612	440	710	392	626	325
200	515	230	285	850	1675	1384	504	880	1669	202.9	880	645	490	770	400	635	425
250	645	290	355	1270	1995	1636	598	1038	1991	254.5	1085	795	600	934	495	785	540
300	672	315	357	1280	2250	1801	663	1138	2158	303.3	1145	857.5	680	960	517.5	805	890
350	735	350	485	1350	2570	2082	819	1263	2567	333.34	1229	941.5	750	1100	566.5	854	1000

Clyde Materials Handling Limited
 Carolina Court, Lakeside
 Doncaster DN4 5RA UK

Tel: +44 (0) 1302 321 313
 Fax: +44 (0) 1302 554 400

solutions@clydematerials.co.uk