

# SD Pump Bomba de Areia

## SD Pump

Developed from Clyde Materials Handlings world beating DensPhase pneumatic conveying technology, The SD Pump sets new standards for dry sand conveying systems.

This unit can be positioned directly below a silo or feed hopper for automatic filling and transfer to reception points prior to process use.

The SD Pump is delivered as a complete 'off the shelf' package and can be installed by semiskilled labour in a matter of hours - there is no need for skilled commissioning technicians.

Five models give transfer rates of up to approximately 35 tonnes per hour and thereby meet every dry sand transfer application within the modern foundry.

The control panel, which is supplied separately to allow positioning near to the plant operator, Has also been designed with simplicity of operation in mind and gives a continuous positive indication of plant status.

## Why the SD Pump ?

The following key features make the Clyde SD Pump the most efficient and cost effective system for the transfer of dry foundry sand.

- Single purpose design gives low unit cost.
- Very efficient operation results in low running costs.
- Simple to operate control panel.
- Top discharge keeps floor areas free.
- 12 month guarantee on parts and pipework.
- Distribution to multiple reception points, with the necessary dump and switch valves, is an available option.
- Features the world proven Clyde Dome Valve - the only moving part in the system.

## Standard Fabrication

SD Pump vessel assemblies supplied complete with Clyde Dome Valve, electropneumatic controls and air supply piping, strainer, pressure regulation and control equipment pre-piped and prewired ready for connection to isolated air and electric supplies.

- Vessels are manufactured to BS5500 Category 3 for a working pressure of 7 barg standard. Other specifications and pressures available.
- Vessels are free standing, special foundations are not required.
- Final working dimensions to be confirmed by certified drawings.

## The Unique Clyde Dome Valve

Central to the operating efficiency of all Clyde Materials Handling systems, or as a stand alone cut-off valve. The Clyde Dome Valve incorporates a unique and highly reliable inflatable sealing arrangement.

## Pneumatic Conveying

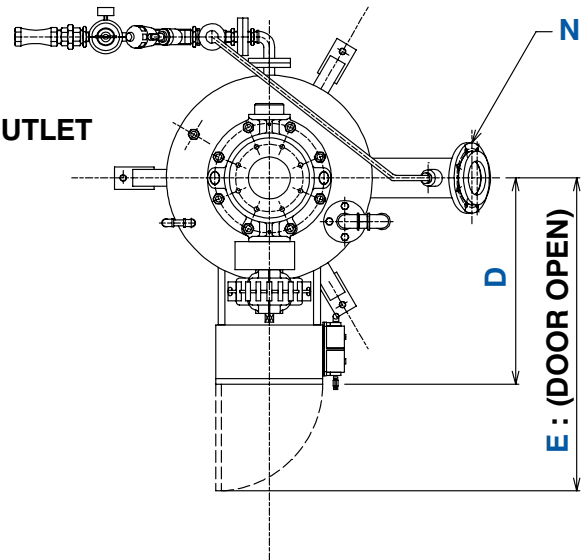
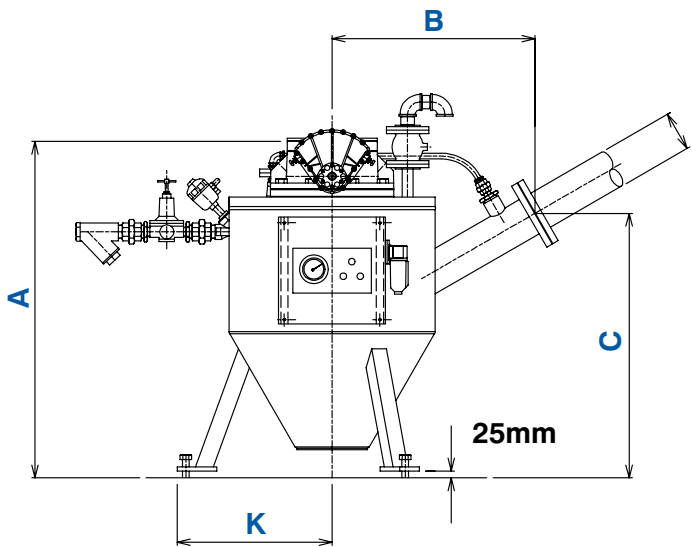
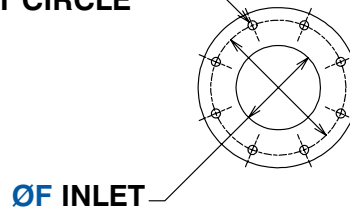
The pneumatic conveying process, enclosed and dust-free, ensures material transfer complies with stringent COSHH and other international regulations for industry and is less harmful to the environment than





**2x ENLARGEMENT  
OF INLET FLANGE**

**G HOLES OF ØH ON  
ØJ BOLT CIRCLE**



Dimensions - (mm)													
Model	A	B	C	D	E	ØF	G	ØH	ØJ	K	ØM	N	Weight
S2/4	694	400	515	589	969	100	8	19	190.5	350	50	2" ASA 150lb	160 KG
S3/4	1000	510	640	634	1014	100	8	19	190.5	400	75	3" ASA 150lb	220 KG
S4/4	1044	610	775	674	54	100	8	19	190.5	460	100	4" ASA 150lb	240 KG
S8/6	1088	720	916	734	1115	150	8	22.2	241.3	550	125	5" ASA 150lb	460 KG
S12/6	1494	710	975	715	1500	150	8	22.2	241.3	550	150	6" ASA 150lb	490 KG

**Note:**

For manual isolation valves add 220mm onto dimension 'A' for models S2/4, S3/4 and S4/4;  
add 232mm onto dimension 'A' for models S6/6 and S12/6.

Clyde Materials Handling Limited  
Carolina Court, Lakeside  
Doncaster DN4 5RA UK

Tel: +44 (0) 1302 321 313  
Fax: +44 (0) 1302 554 400

solutions@clydematerials.co.uk



► [www.clydematerials.com](http://www.clydematerials.com)