

CD Pump

DensPhase 2

Pneumatic Conveying

The pneumatic conveying process, enclosed and dust-free, ensures material transfer complies with stringent COSHH and other international regulations for industry and is less harmful to the environment than traditional mechanical methods.

The Unique Clyde Dome Valve

Central to the operating efficiency of all Clyde Materials Handling systems, or as a stand alone cut-off valve, the Clyde Dome Valve incorporates a unique and highly reliable inflatable sealing arrangement.

DensPhase CD Pump

The DensPhase system is a simple, effective and highly reliable method of conveying material from a single collection point to either single or multiple reception hoppers.

Developed in the 1970's, DensPhase' are capable of operating at temperatures up to 480°C with throughput rates of up to 100 t/hr and distances up to 200 metres. The inherent simplicity of the Clyde Dome Valve ensures system reliability and low maintenance operation.

The CD Pump is designed to minimise material degradation by using increased pipeline sizes enabling lower transfer velocities with the reduction of product damage and pipeline wear and is particularly suitable for conveying fine, cohesive, fluidisable and delicate products.

Standard Fabrication

DensPhase CD Pump vessel assemblies supplied complete with inlet & outlet Dome Valves, electro-pneumatic controls and air supply piping, strainer, pressure regulation and control equipment pre-piped and pre-wired ready for connection to isolated air and electric supplies.

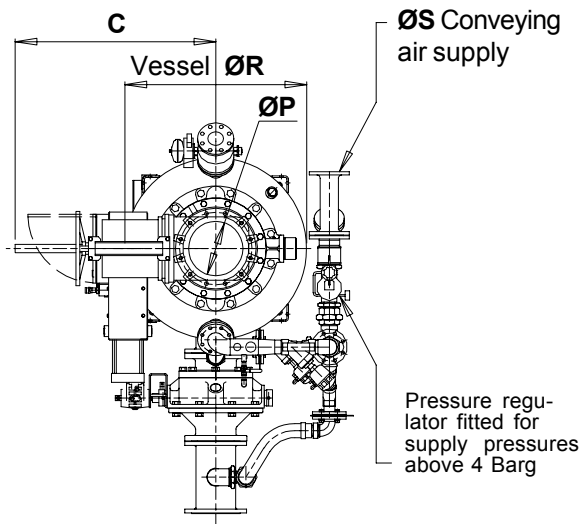
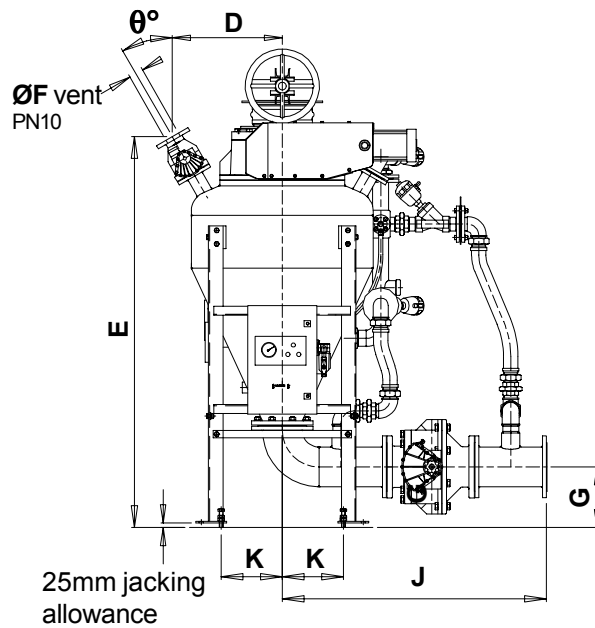
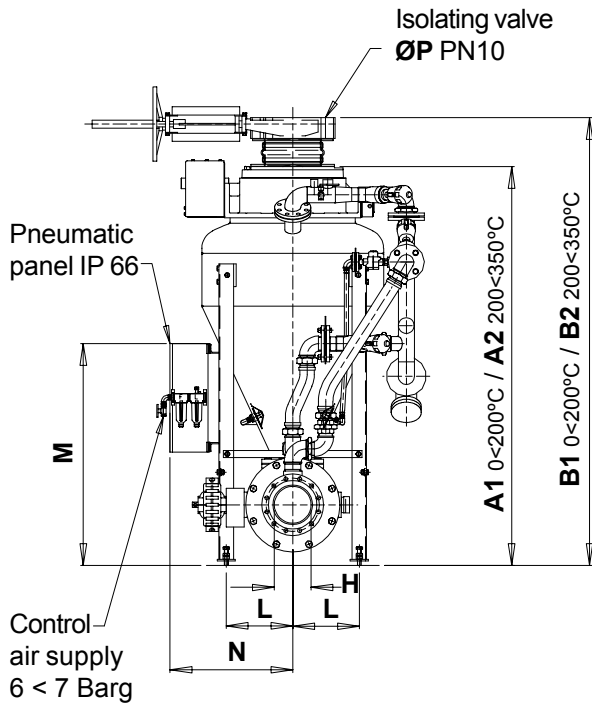
- Vessels are manufactured to PD5500, 2000 Category 2 for a working pressure of 7 barg standard. Other specifications and pressures available.
- Vessels are free standing, special foundations are not required.
- Optional isolating valve and adapter are shown for reference only.
- Final working dimensions to be confirmed by certified drawings.

DensPhase Technology

The DensPhase system capitalises on all the assets of pneumatic conveying: simplicity, reliability and flexibility. Ensuring minimal breakage of friable products, the extensive range of DensPhase machines shares standard components, individually tailored to handle specific requirements of a wide range of materials.



Convey



Note:

- 1 Design pressure - 7 bar: Maximum conveying pressure - 4.5 bar.
- 2 Dimensions apply to PH0 - 100°C maximum and PHV - 200°C maximum.
- 3 Water cooling connections for Dome Valves above 200°C not shown.
- 4 Models 2/4 and 3/4 have a pinch type vent valve.

Dimensions - (mm, unless otherwise stated)

Model	A1	A2	B1	B2	C	D	E	F	G	H	J	K	L	M	N	P	R	S	θ°	KG
2/4/2	980	1000	1200	1220	520	200	985	¾"	158	50	644	137	162	716	500	100	532	Rp1"	0	855
2/8/2	1018	1038	1263	1283	828	457	1153	50	158	50	644	137	162	716	500	200	567	Rp1"	45	940
3/4/3	1131	1151	1351	1371	520	200	1137	¾"	175	80	744	171	196	716	500	100	532	Rp1½"	0	950
3/8/3	1294	1314	1539	1559	828	457	1429	50	175	80	744	171	196	716	500	200	532	Rp1½"	45	960
4/4/4	1353	1373	1573	1593	520	458	1377	50	245	100	1011	200	230	840	539	100	698	Rp2"	30	972
4/8/4	1367	1387	1612	1632	828	458	1377	50	245	100	1011	200	230	860	539	100	698	Rp2"	30	1050
8/8/5	1629	1649	1874	1894	828	505	1644	50	330	125	1254	245	255	1050	585	200	854	Rp2"	30	1026
12/8/6	1856	1876	2101	2121	828	505	1871	50	295	150	1254	285	315	1100	628	200	854	Rp2½"	30	1115
12/12/6	1839	1851	2109	2121	1108	607	1795	80	295	150	1254	303	333	1125	643	300	1003	Rp2½"	30	1075
20/12/8	2201	2213	2471	2483	1108	607	2157	80	335	200	1367	340	370	1200	690	300	1003	100 PN10	30	1250
30/12/10	2651	2663	2921	2933	1108	607	2607	80	385	250	1572	340	370	1200	690	300	1003	100 PN10	30	1500
50/12/12	3001	3013	3271	3283	1108	619	2952	80	417	300	1789	405	420	1300	765	300	1163	100 PN10	30	1880

CLYDE MATERIALS HANDLING

CLYDE MATERIALS HANDLING. Shaw Lane Industrial Estate, Doncaster, South Yorkshire DN2 4SE, England.
 Tel: +44 (0)1302 321313 Fax: +44 (0)1302 554400 www.clydematerials.com solutions@clydematerials.co.uk
 This leaflet is intended for guidance only. It does not form part of any contract and is subject to change without notice.

Data sheet 1103e

UK Issue : September '2001

The Dome Valve is sold under the trade name of Spheri Valve in the United States of America.