

Pipes & Bends

Flanges

All conveying pipework, bends and fittings are supplied with flanges drilled to **BS4504 PN10** as standard, with (depending upon application), either Code 101 flanges, or Clyde Materials Handling Ltd. alignment flanges.

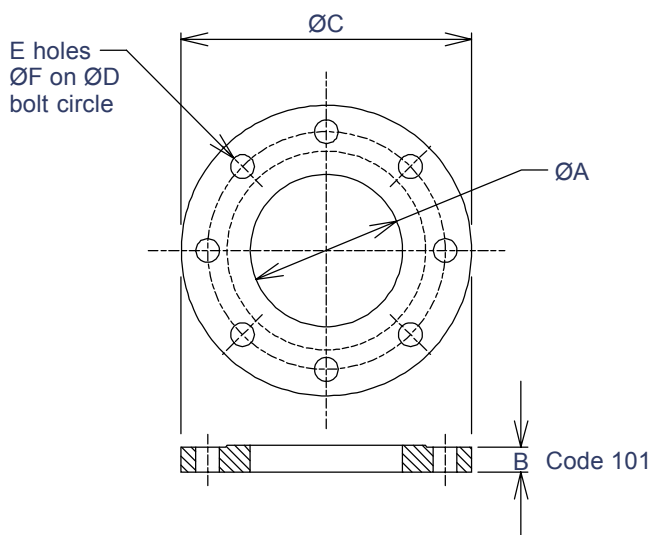
Available in the following material specification:

BS1501 Part 1 - 151, grade 360
or **BS EN 10 025 Fe 430A**

Flanges can also be supplied to client specification.

Conveying Pipework

Supplied in nominal standard 6 metre lengths with flanges, flange bolts and gaskets. Brackets and other fixings necessary to attach pipework to supports and structures are not included. Pipe is supplied unpainted.



BS4504 PN10 Flanges						
Ø n.b.	ØA	B	ØC	ØD	E	ØF
50	61.5	20	165	125	4	18
80	90.5	20	200	160	8	18
100	116	22	220	180	8	18
125	141.5	22	250	210	8	18
150	170.5	24	285	240	8	22
175	195.2	24	315	270	8	22
200	221.5	24	340	295	8	22
250	276.5	26	395	350	12	22
300	327.5	26	445	400	12	22
350	359.5	28	505	460	16	22
400	411	32	565	515	16	26
450	462	36	565	565	20	26

Available in the following material specification:

Mild steel (Schedule 40 or equal).

BS1387 'Heavy' (up to Ø150mm n.b.)

BS3601 H.F.S. (Ø200mm n.b. to Ø400mm n.b.)

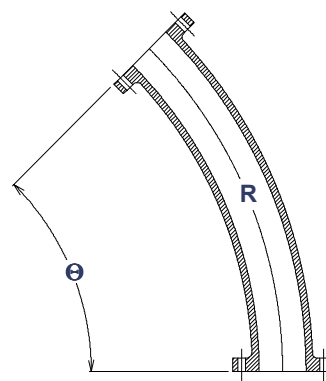
Stainless steel.

BS4825 (Grade 316L)

Pipework can also be supplied to client specification.

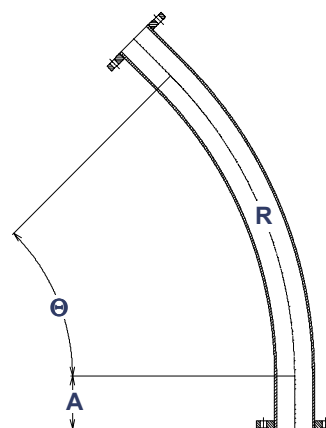
Cast bends

Cast Ni-Hard (**BS4844** grade 2B) or Grade 250 Iron bends are recommended for especially abrasive lumpy materials, such as bottom ash, glass cullet, etc.



Fabricated Bends

Plain bends with long radius are recommended for cohesive powders or damp materials that fall into the non-abrasive category.



A straight pool is designed into the bend before the flange connection to assist clip attachment to support brackets. Bends are manufactured from carbon steel pipe and offer good resistance to wear when used with the DensePhase low material velocity system.

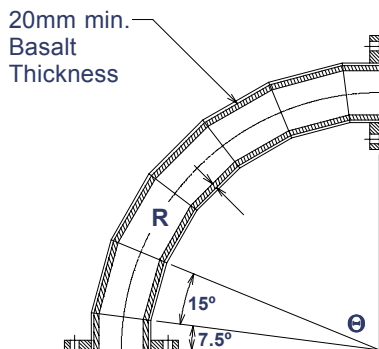
Convey

Ø n.b.	Fabricated				Cast		
	A	R	Θ	Wgt	R	Θ	Wgt
50	150	610	To Spec.	14	500	45°	13
80	150	915	To Spec.	30	750	30°/45°	17
100	150	1220	To Spec.	48	1000	10°/30°/45°	40
125	150	1525	To Spec.	73	1524	30°/45°	81
150	150	1830	To Spec.	107	1500	10°/30°/45°	120
175	150	1830	To Spec.	132	2133	45°	
200	150	1830	To Spec.	159	1830	10°/45°	
250	150	1830	To Spec.	173	2000	30°	
300	150	1830	To Spec.	193			
350	150		To Spec.				
400	150		To Spec.				

Weights (kg) are for 90° fabricated & 45° cast bends.

Basalt Lined

Bends are manufactured from carbon steel pipe with basalt lining to offer greater resistance to wear.

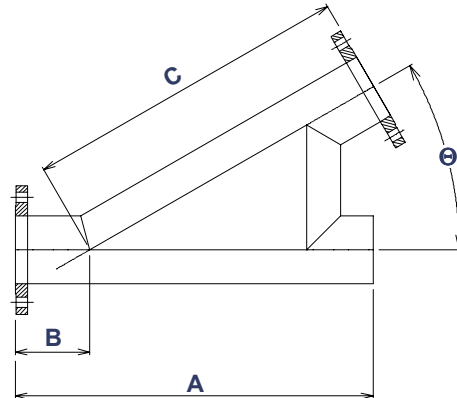


Basalt Lined			
Ø n.b.	Flange Ø n.b.	R	Θ
80	125	400	To Spec.
100	150	500	To Spec.
125	175	625	To Spec.
150	200	750	To Spec.
200	250	1000	To Spec.
250	300	1250	To Spec.
300	300	1500	To Spec.
350	400	1750	To Spec.
400	450	2000	To Spec.

Fitting

The standard bend fitting for dry materials is unique to the DensePhase system. It is a compact, easily installed fitting for redirecting the pipe system through 30°, 45°, 60°, and 90° as standard, or other angles as necessary.

The design overcomes the problem of high wear rates on long radius bends whilst ensuring a smooth flow of material into the new direction without causing problems due to blockages.



Bend Fittings				
Ø n.b.	A	B	C	Θ
80	450	100	400	30°
	457	216	305	45°
	450	225	286	60°
	450	225	287	75°
	457	228.5	228.5	90°
100	610	127	559	30°
	550	250	355	45°
	600	300	387	60°
				75°
	610	305	305	90°
125	720	150	635	30°
	660	305	406	45°
	750	375	487	60°
				75°
	762	381	381	90°
150				30°
	765	375	530	45°
	920	460	610	60°
				75°
	900	450	450	90°
200				30°
				45°
	1220	600	782	60°
				75°
	1200	600	595	90°

CLYDE MATERIALS HANDLING

CLYDE MATERIALS HANDLING Ltd. Shaw Lane Industrial Estate, Doncaster, South Yorkshire DN2 4SE, England.

Telephone: +44 (0)1302 321313 Facsimile: +44 (0)1302 369055. www.clydematerials.co.uk

This leaflet is intended for guidance only. It does not form part of any contract and is subject to change without notice.